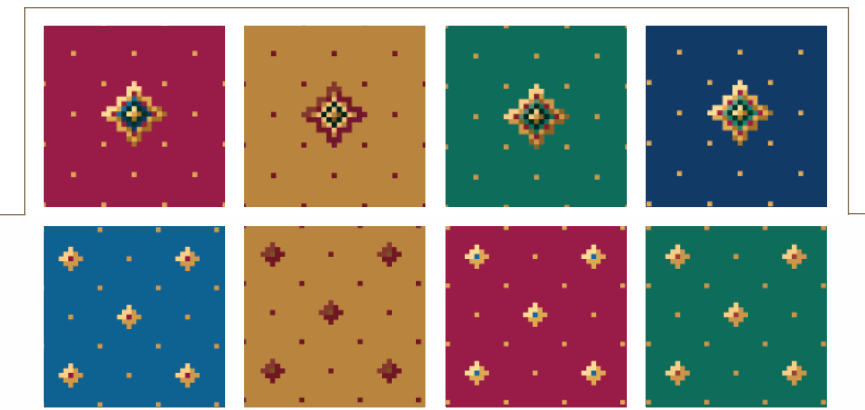

SPECIFICATION

Construction	Axminster
Pile Content	80% Wool 20% Nylon
Rows	27.6 per 10cm (7 per inch)
Pitch	27.6 per 10cm (7 per inch)
Pile Weight	1033gms sq m (30.5 oz sq yd)
Backing	Jute/Polyester/Polypropylene
Width	Broadloom 3.66m (12ft)
Suitability	Medium Contract
The above specifications are subject to normal commercial tolerance. A fully detailed specification for this product can be made available by application to The Wilton Carpet Factory Ltd	
Flammability	BS 4790 Hot Metal Nut Test ASTM E648 Radiant Panel BS 6307 Methenamine Pill
Biological Treatment	Fully Mothproofed
Colour Fastness	Wet 3-4 (Scale 1-5)
Installation and Maintenance	Please refer to factory for full installation and maintenance advice



chartwell



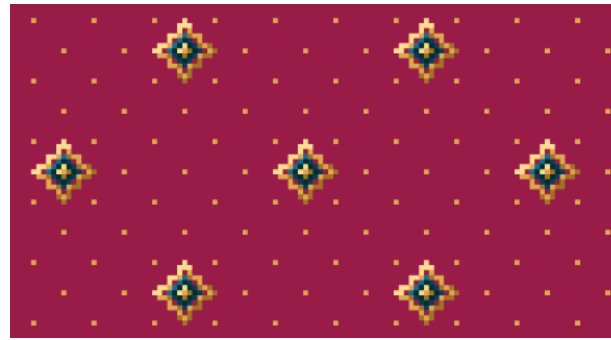
King Street, Wilton, Salisbury SP2 OAY
Tel: 01722 746000 Fax: 01722 742923
E-mail: sales@wiltoncarpets.com
www.wiltoncarpets.com



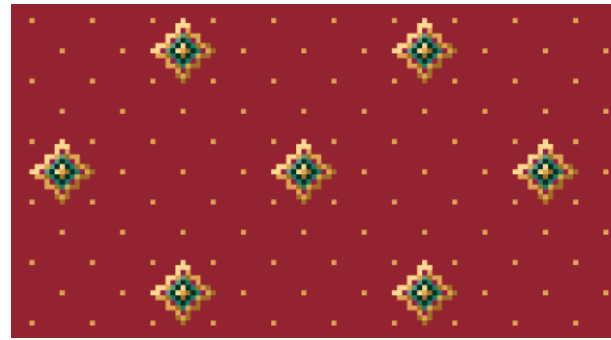
Chartwell

Design Repeat 1m6cm - Straight Match

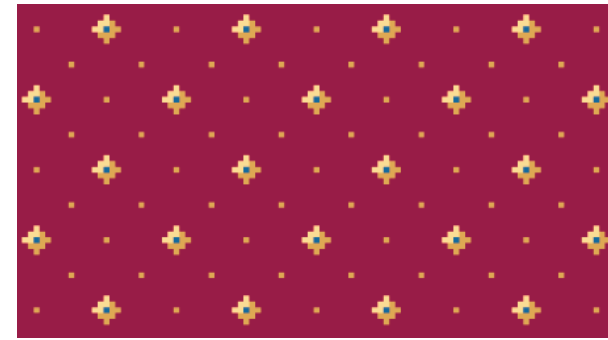
The Chartwell Collection has a choice of two design options both available in 8 co-ordinating colourways. Woven using 80% wool 20% nylon pile in axminster construction the simple elegance created by the Chartwell Diamond and Chartwell Pindot designs will compliment any location.



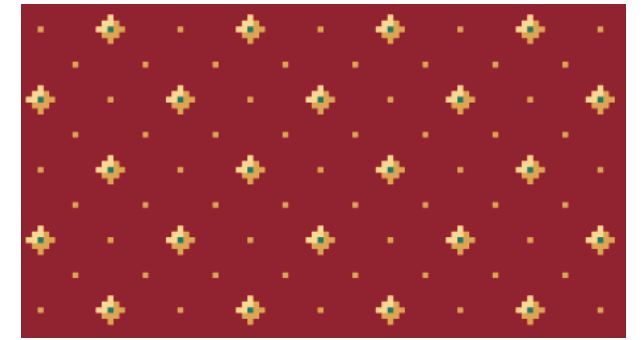
91/17542 **Toreador**



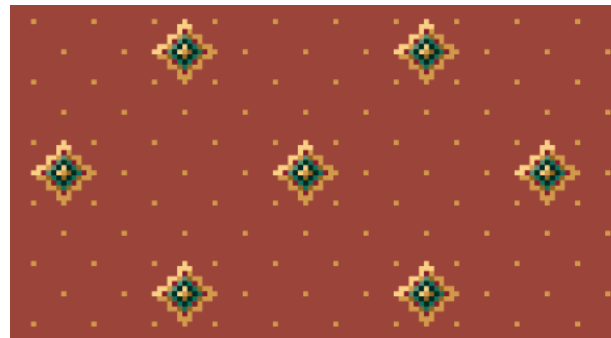
41/17540 **Paprika**



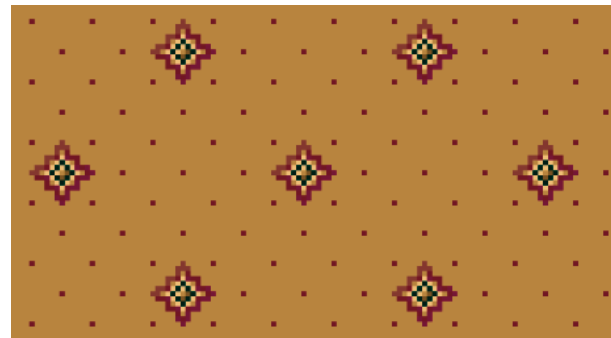
91/17532 **Toreador**



41/17530 **Paprika**



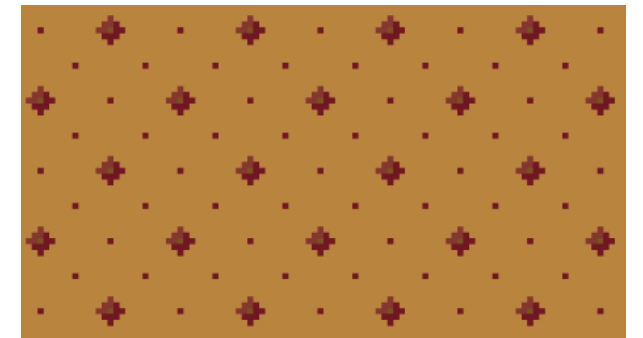
42/17535 **Cinnamon**



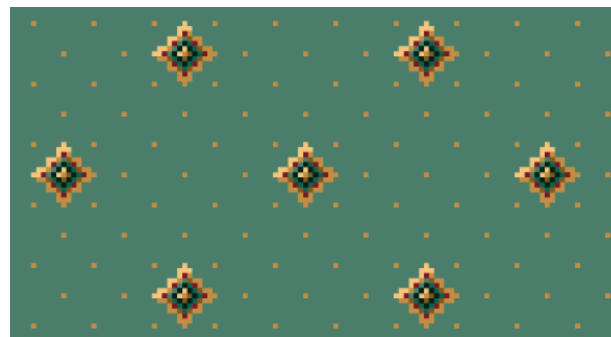
62/17537 **Honey**



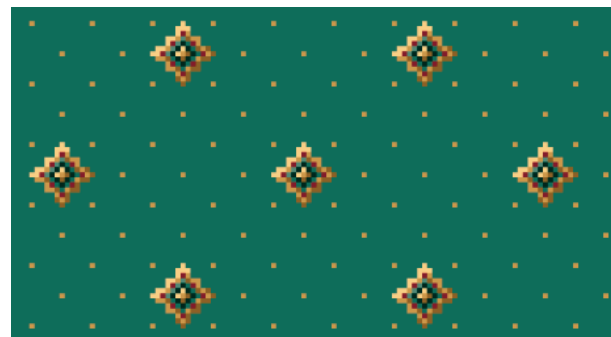
42/17525 **Cinnamon**



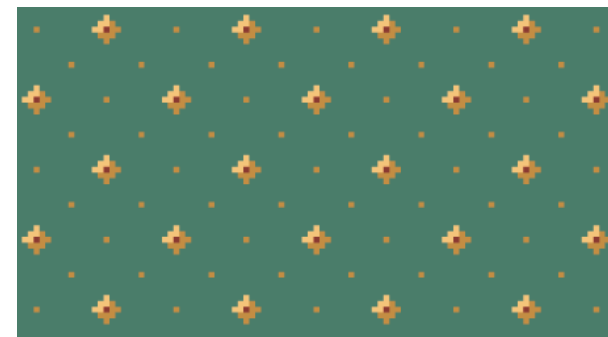
62/17527 **Honey**



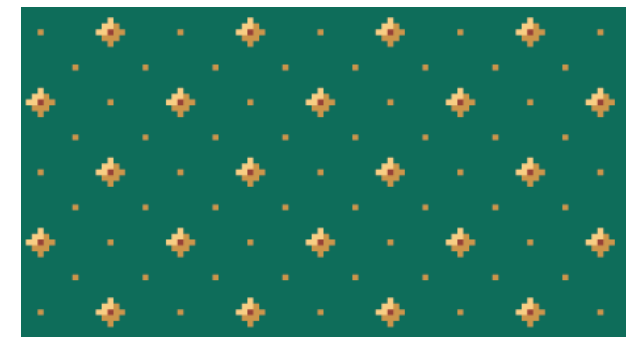
82/17534 **Bluegrass**



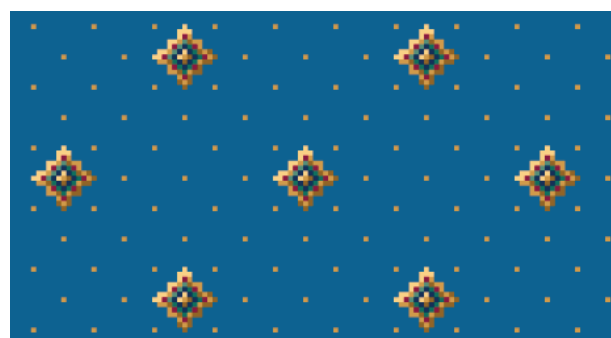
81/17533 **Atlantic**



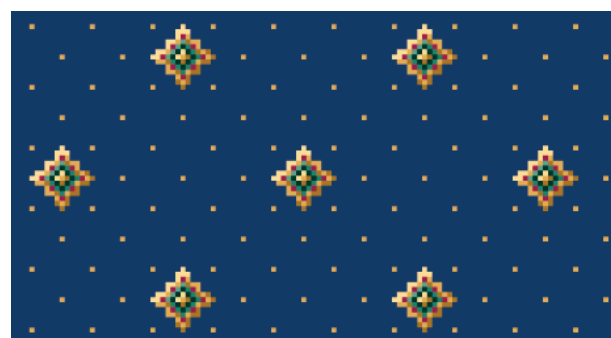
82/17524 **Bluegrass**



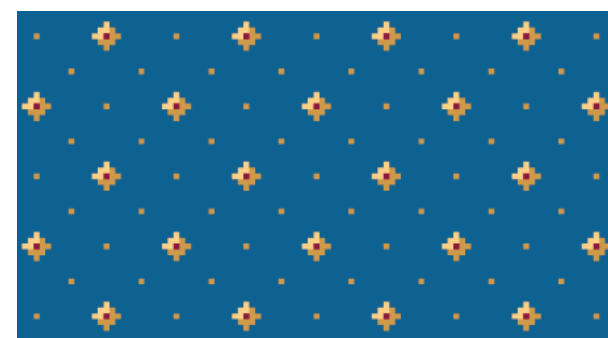
81/17523 **Atlantic**



33/17538 **Indigo**



30/17536 **Classic Blue**



33/17528 **Indigo**



30/17526 **Classic Blue**