

AUTOGRAPH



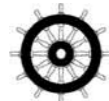
Construction	Tufted
Pile Content	80% Wool 20% Nylon – BS 3655
Pitch	31.5 per 10cm (8 per inch)
Pile Weight	1220gm m ² / 36oz sq yd – ISO 8543 (BS 4223)
Backing – Secondary	Jute
Width	4.00m (13ft 1 ½”) Broadloom – BS 3655
Total Carpet Thickness	9.00mm +/- 1.00mm (0.35 inches) ISO 1765 (BS 4223)
Total Carpet Weight	2400gm m ² +/- 5% (70oz sq yd) ISO 8543 (BS 4223)
Suitability for Use	Heavy Contract

The above specifications are subject to normal commercial tolerance. A fully detailed specification for this product can be made available by application to The Wilton Carpet Factory Limited

Flammability and Fire Classifications	Hot Metal Nut Test BS 4790 Radiant Panel ISO 9239-1 Methanamine Pill BS 6307
---------------------------------------	--



CE EN 14041 2004 Classification Cfl s1 (C Flooring)



Wheelmark

IMO and US Coast Guard Certified
IMO Resolution A653 (16)
IMO Resolution MSC 61 (67) Annex 1 Part 5 and Annex 2

Biological Treatment	Fully Mothproofed
Colour Fastness	Wet 3-4 (Scale 1-5)
Installation and Maintenance	Please refer to the factory for full installation and maintenance advice

ISO 9001
Quality Assurance Certified



The Wilton Carpet Factory Limited
Minster Street, Wilton, Wiltshire SP2 0AY

T: 01722 746000 F: 01722 742923
E: sales@wiltoncarpets.com
www.wiltoncarpets.com

© Copyright The Wilton Carpet Factory Limited 2010
All copyright, design rights and intellectual property rights existing in our designs are and will remain the property of The Wilton Carpet Factory Limited. Any infringement of these rights will result in appropriate legal action.
Colours are reproduced within the limits of the printing process.

P-1010-004

AUTOGRAPH

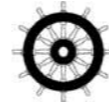


Smart, stylish and contemporary
This soft, durable and versatile carpet suits many commercial applications.

distinction

AUTOGRAPH

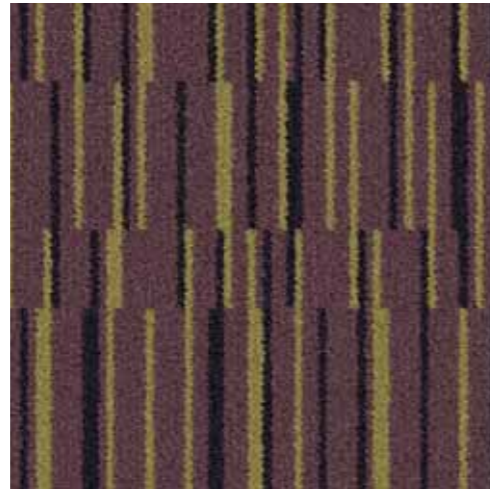
Wool-rich, using British yarns this 4m broadloom tufted carpet is created in Heavy Contract quality. A versatile carpet suited to a wide range of commercial uses.



Wheelmark

IMO Approved

identity



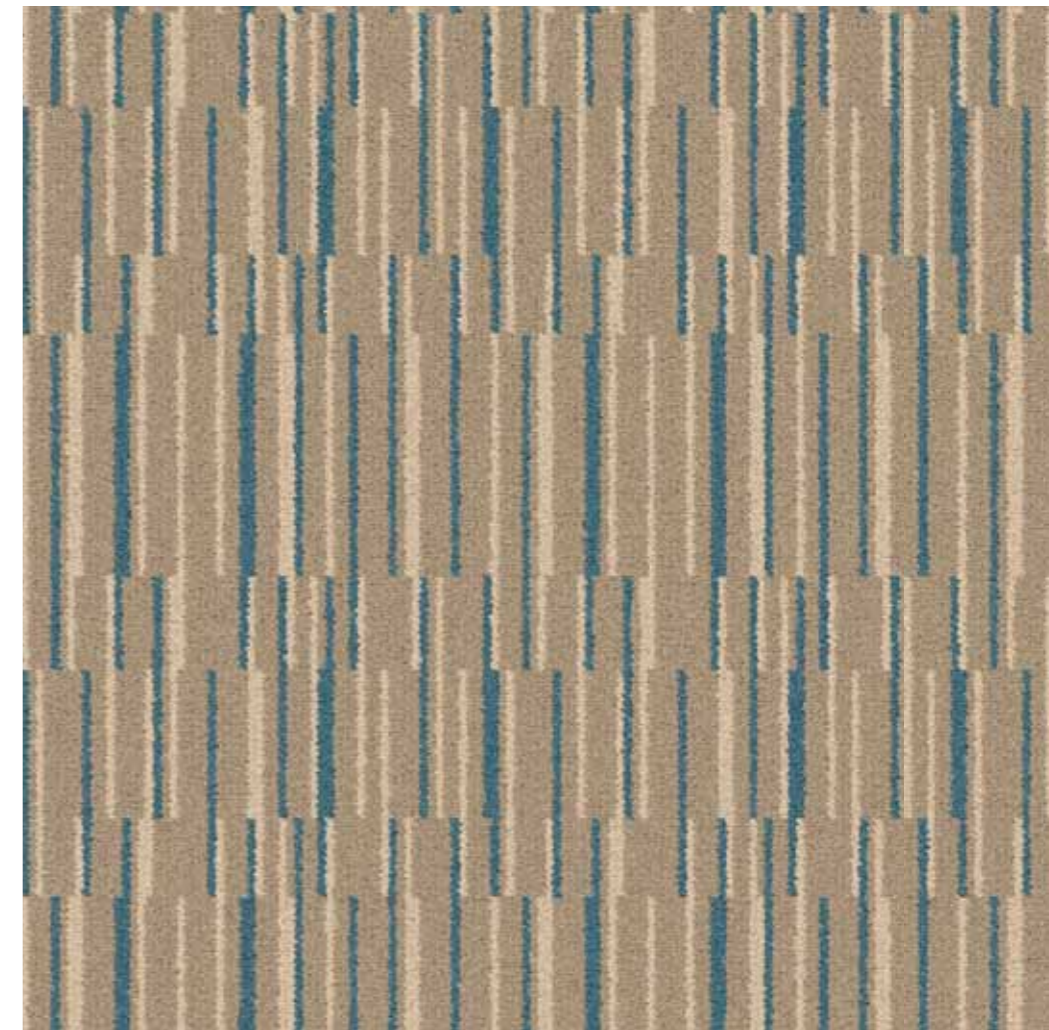
Damson 760/50098



Iced Coffee 110/50098



Cappuccino 120/50098



Marine 130/50098



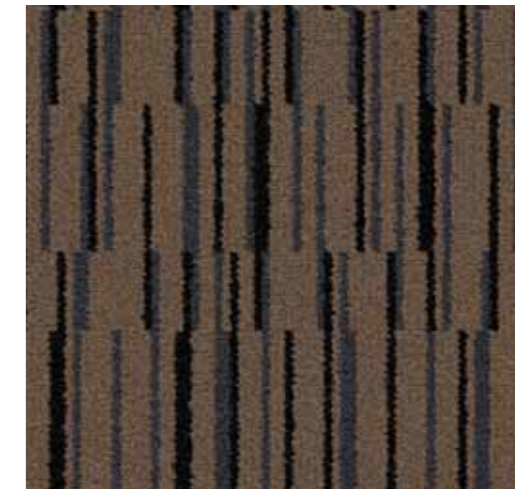
Aubergine 190/50098



Pebble 170/50098



Mushroom 220/50098



Pewter 250/50098

contemporary
colourways