

# AMALFI

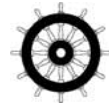
Construction	Axminster
Pile Content	80% Wool 20% Nylon – BS 3655
Rows	31.5 per 10cm (8 per inch)
Pitch	27.6 per 10cm (7 per inch)
Pile Weight	1182gms m <sup>2</sup> / 34.8oz sq yd – ISO 8543 (BS 4223)
Backing	Jute/Polester/Polypropylene
Backing Treatment	SBR Fire Retardant Latex
Width	3.66m (12ft) Broadloom – BS 3655
Total Carpet Thickness	9.00mm +/- 1.00mm (0.35 inches) ISO 1765 (BS 4223)
Total Carpet Weight	2236gms m <sup>2</sup> +/- 5% (65.9ozs sq yd) ISO 8543 (BS 4223)
Suitability for Use	Heavy Contract

The above specifications are subject to normal commercial tolerance. A fully detailed specification for this product can be made available by application to The Wilton Carpet Factory Ltd

Flammability and Fire Classifications	Hot Metal Nut Test BS 4790 Radiant Panel ISO 9239-1 Methanamine Pill BS 6307
---------------------------------------	--



CE EN 14041 2004 Classification Bfl S1 (B Flooring)



Wheelmark

IMO and US Coast Guard Certified  
IMO Resolution A653 (16)  
IMO Resolution MSC 61(67) Annex 1 Part 5 and Annex 2  
IMO Resolution MSC 61(67) Annex 1 Part 2 and Annex 2

Biological Treatment	Fully Mothproofed
Colour Fastness	Wet 3-4 (Scale 1-5)
Installation and Maintenance	Please refer to the factory for full installation and maintenance advice

ISO 9001  
Quality Assurance Certified



The Wilton Carpet Factory Limited  
King Street, Wilton, Salisbury, Wiltshire, United Kingdom SP2 0AY

Tel: 01722 746000 Fax: 01722 742923  
Email: [sales@wiltoncarpets.com](mailto:sales@wiltoncarpets.com)  
[www.wiltoncarpets.com](http://www.wiltoncarpets.com)

# AMALFI

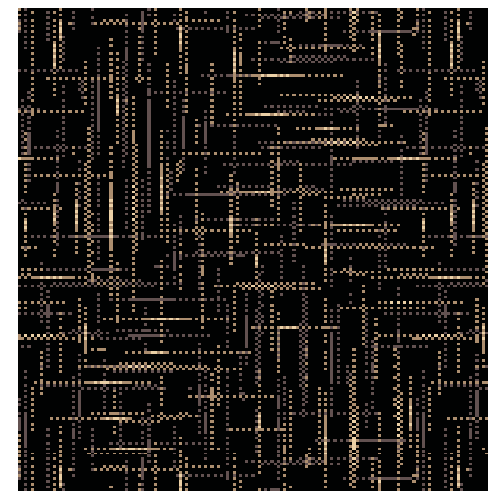


# AMALFI

Woven in high quality Axminster construction with 80% Wool 20% Nylon pile Amalfi is suitable for a range of commercial uses including Leisure and Hotel installations. Manufactured in 3.66m (12ft) broadloom Amalfi is graded for Heavy Contract Use.



Amalfi Scala – Pattern Repeat 27cm Straight Match  
Amalfi Positano – Pattern Repeat 51cm Straight Match  
Amalfi Rialto – Pattern Repeat 9cm Straight Match



Positano Black 13/21096



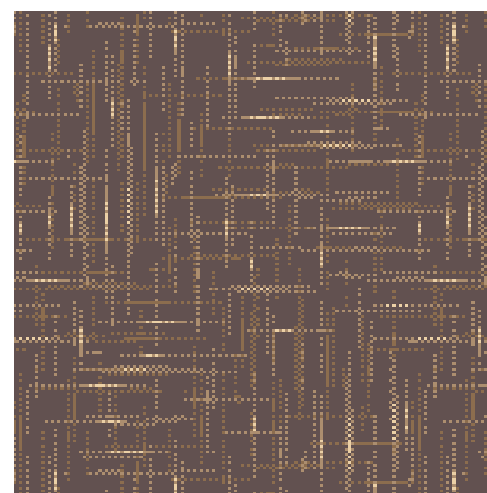
Positano Dahlia 94/21098



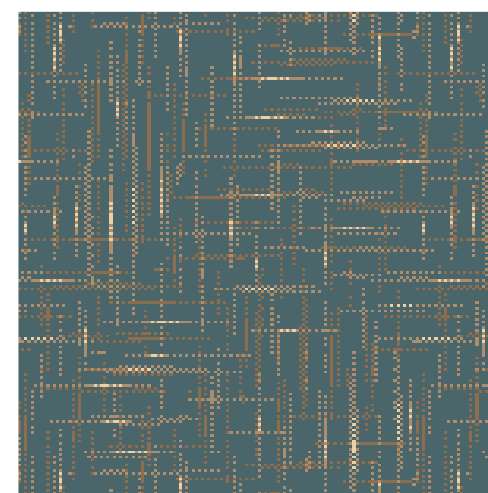
Scala Coriander 51/21092



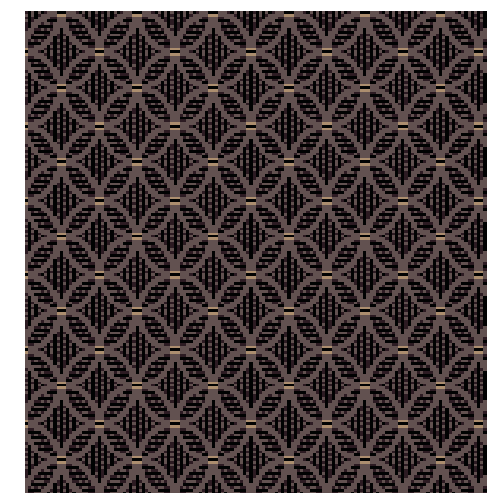
Scala Cashmere 50/21093



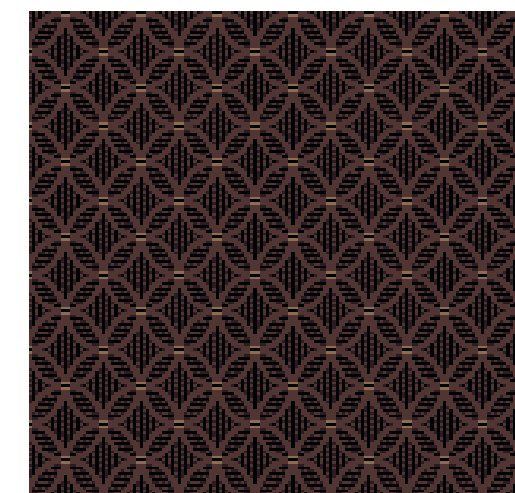
Positano Slate 72/21097



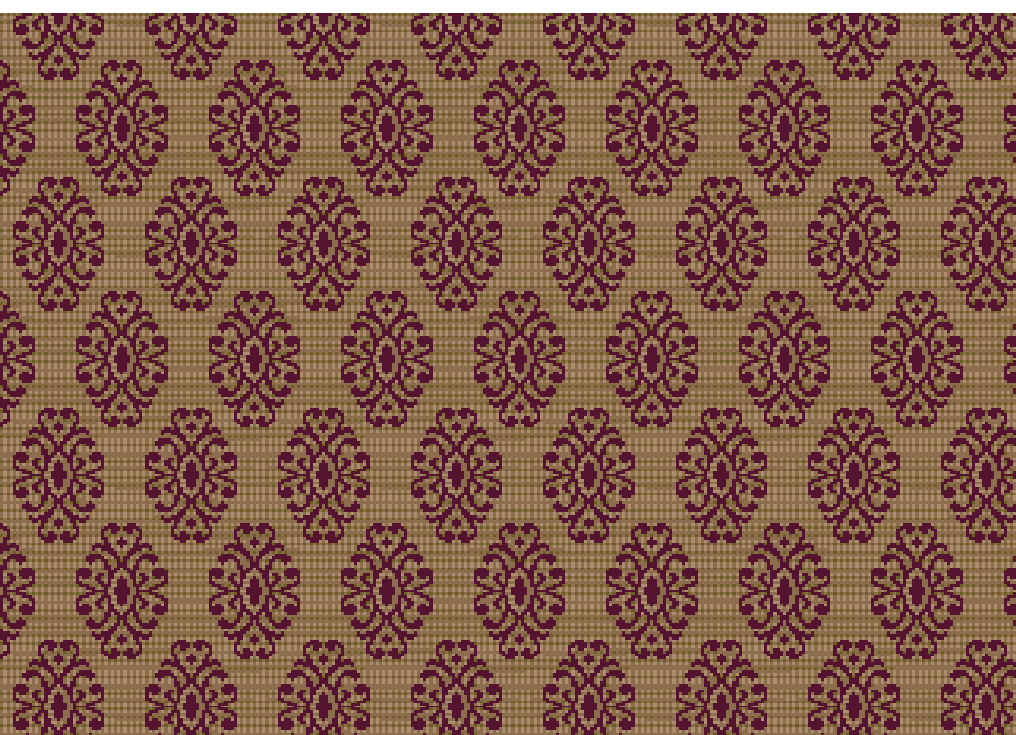
Positano Ocean 35/21099



Rialto Slate 72/21101



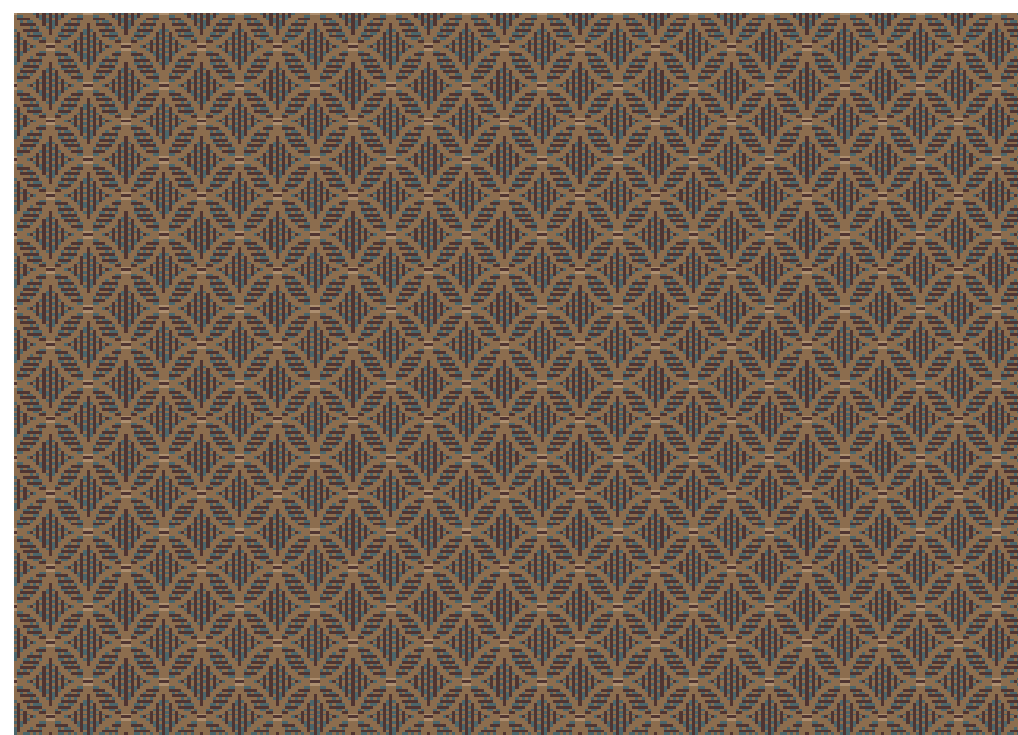
Rialto Cashmere 50/21100



Scala Cyclamen 95/21094



Scala Slate 72/21095



Rialto Coriander 51/21103



Rialto Brazil 14/21102